

Contents

Contents	i
List of Tables	ii
List of Figures	ii
Glossary	iii
Abbreviations and Acronyms	v
1 Introduction.....	1
1.1 Preamble	1
1.2 The Developer	2
1.3 Project Background	3
1.3.1 Original Offshore Applications	3
1.3.2 Revised Offshore Application	3
1.3.3 Change to Onshore Application Site.....	5
1.3.4 Onshore Application.....	5
1.4 Purpose of this Document	5
1.4.1 Scope of this EIA Report	5
1.5 The EIA Team	6
1.6 EIA Report Structure.....	8
1.6.1 Composition	8
1.7 Opportunity to Comment	10
References	12

List of Tables

Table 1.1 Inch Cape Offshore Limited’s EIA Team Technical Specialists for the OnTW 6

Table 1.2 EIA Report Technical Chapter Breakdown..... 9

Table 1.3 List of Appendices..... 9

List of Figures

Figure 1.1 OnTW Application Site Boundary 2

Figure 1.2 Inch Cape Wind Farm and Offshore Transmission Works..... 4

Glossary

Application Site	The area within the red line Planning Boundary comprising the Onshore Transmission Works (OnTW), as defined.
Consented Offshore Transmission Works (OfTW)	Offshore substation platforms and their foundations and substructures, interconnector cables and offshore export cables, as consented by the Scottish Ministers on 10 October 2014.
Consented Offshore Wind Farm	Wind turbine generators and their foundations and substructures, and inter-array cables, as consented by the Scottish Ministers on 10 October 2014.
Construction Compound	An indicative area within the Application Site used to accommodate the temporary work site including; construction parking, construction welfare facilities, construction meeting room, construction laydown and storage area, construction security facilities (fenced area/gate and security access) and construction security lighting.
EIA Report	Report presenting the findings of the Environmental Impact Assessment (EIA).
ICOL's Offshore Transmission Works (OfTW)	Offshore substation platforms (OSPs) and their foundations and substructures, interconnector cables and Offshore Export Cables. This refers to either the Consented OfTW or Revised OfTW, as defined.
ICOL's Offshore Wind Farm	This includes proposed wind turbine generators, foundations and substructures and inter-array cables. This refers to either the Consented Offshore Wind Farm or Revised Offshore Wind Farm, as defined.
Judicial Review	Court proceeding in which a judge reviews the lawfulness of a decision or action made by a public body.
Landfall	Point where up to two Offshore Export Cables from ICOL's Offshore Wind Farm will be brought ashore.
Offshore Export Cable	The subsea, buried or protected electricity cables running from ICOL's Offshore Wind Farm offshore substation to the Landfall.
Onshore Export Cables	Electricity cables from the Onshore Substation to the grid connection point.
Onshore Export Cable Corridor	The area within the Application Site where the proposed Onshore Export Cables will be laid.
Onshore Substation	The electrical substation comprising of all the equipment and associate infrastructure required to enable connection to the electrical transmission grid.
Onshore Substation Site/Substation Site	The indicative area within the Application Site where the Onshore Substation and screening will be located.
Onshore Transmission Works (OnTW)	All proposed works within the Application Site, typically including the Onshore Substation, cables transition pits, cable jointing pits, underground electricity transmission cables connecting to the Onshore Substation and further underground cables required to facilitate connection to the national grid. This includes all permanent and temporary works required. See <i>Chapter 5: Description of Development</i> for full details.
Original Application Site	The red line planning boundary in which the Original OnTW was to be located in accordance with planning permission in principle with East Lothian Council (ELC) reference 14/00456/PPM.
Original Onshore Substation	The electrical substation comprising of all the equipment and associate infrastructure required to enable connection to the electrical transmission grid as was granted planning permission in principle in September 2014, under ELC reference 14/00456/PPM.

Original OnTW	The OnTW, as was granted planning permission in principle in September 2014, under ELC reference 14/00456/PPM.
Original OnTW EIA	The Environmental Impact Assessment (EIA) that was prepared to support the planning application for the Original OnTW and reported in the Original OnTW ES, as defined.
Original OnTW ES	The Environmental Statement (ES) that was submitted to support the application for the Original OnTW in 2014.
Planning Boundary	The red line application boundary containing the Onshore Transmission Works (OnTW), as defined.
Revised Offshore Transmission Works (OfTW)	Offshore substation platforms and their foundations and substructures, interconnector cables and Offshore Export Cables, as per the scoping report submitted to Marine Scotland Licensing Operations Team on behalf of the Scottish Ministers in April 2017.
Revised Offshore Wind Farm	Wind turbine generators and their foundations and substructures, and inter-array cables, as per the scoping report submitted to Marine Scotland Licensing Operations Team on behalf of the Scottish Ministers in April 2017.
Scoping Opinion	The Scoping Opinion adopted by ELC as to the scope and information to be provided in support of an application for the OnTW, as defined.
Scoping Report	Report prepared as the first stage of the EIA process in support of a request for a Scoping Opinion from ELC, under Regulation 17 of the EIA Regulations. The Report was submitted in July 2017.

Abbreviations and Acronyms

EIA	Environmental Impact Assessment
EIA Report	Environmental Impact Assessment Report
ELC	East Lothian Council
ES	Environmental Statement
ICOL	Inch Cape Offshore Limited
MLWS	Mean Low Water Springs
NETS	National Electricity Transmission System
OfGEM	Office of Gas and Electricity Markets
OfTW	Offshore Transmission Works
OnTW	Onshore Transmission Works
PAC	Pre-Application Consultation
PAN	Planning Application Notice
PPP	Planning Permission in Principle
RRPL	Red Rock Power Limited
RSPB	Royal Society for Protection of Birds
SSE	Scottish and Southern Energy Plc.
WTG	Wind Turbine Generator
PAN	Proposal of Application Notice

1 Introduction

1.1 Preamble

- 1 Inch Cape Offshore Limited (ICOL) is applying to East Lothian Council (ELC) for Planning Permission in Principle (PPP) under the Town and Country Planning (Scotland) Act 1997 (as amended) for the Onshore Substation, electricity cables and associated infrastructure, (referred to in this Environmental Impact Assessment (EIA) Report as the Onshore Transmission Works (OnTW)), required to connect ICOL's Offshore Wind Farm to the National Electricity Transmission System (NETS). See *Chapter 5: Description of Development* for further details.
- 2 ICOL signed a grid connection agreement with National Grid Electricity Transmission in January 2012 to connect electricity generated by the Wind Farm at the existing grid substation at Cockenzie, full details of which can be found in *Chapter 4: Site Selection and Alternatives*. In 2014 ICOL was granted PPP for the OnTW at a location to the south of the currently proposed OnTW Application Site (referred to in this Environmental Impact Assessment (EIA) Report as the Original Onshore Transmission Works (OnTW) under reference 14/00456/PPM).
- 3 ICOL did not implement permission 14/00456/PPM but decided to instead move the OnTW to the current location.
- 4 The Application Site for the OnTW is located principally on the site of the former Cockenzie Power Station and extends to Mean Low Water Springs (MLWS) (see Figure 1.1). This EIA Report has been submitted in support of the application for PPP.

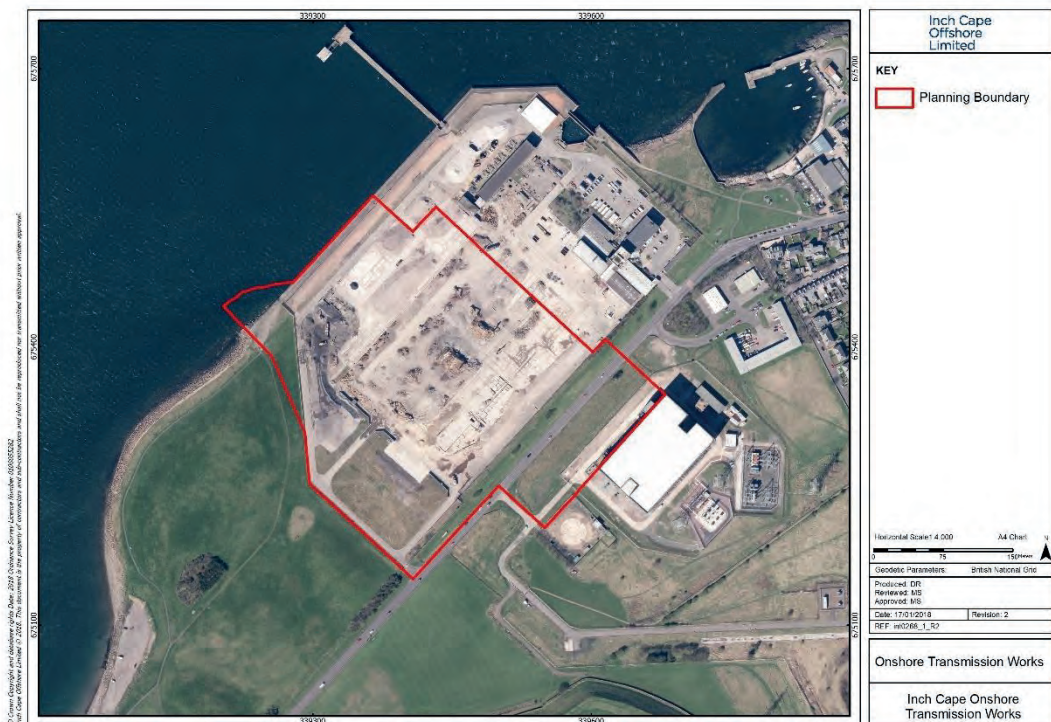


Figure 1.1 OnTW Application Site Boundary

- 5 An EIA has been undertaken for the OnTW to meet the requirements of the Town and Country Planning (Environmental Impact Assessment) (Scotland) Regulations 2017 (Scottish Parliament, 2017) (the EIA Regulations). This EIA Report details the findings of the EIA for the OnTW, including assessment of the cumulative and in combination effects.
 - 6 The defined terms used throughout this EIA Report are included at the beginning of this chapter. A glossary and a list of abbreviations and acronyms are detailed at the beginning of each chapter.
- ## 1.2 The Developer
- 7 ICOL is a company formed to develop, finance, construct, operate, maintain and decommission the Inch Cape Offshore Wind Farm.
 - 8 Following the sale from Repsol in May 2016, ICOL is now owned by Red Rock Power Limited (RRPL), a UK company based in Edinburgh established to develop, own and operate clean energy projects owned by SDIC Power Holdings Co Ltd. of China. RRPL is already supporting the development of new and clean energy in Scotland through its investment in the Beatrice offshore wind project, led by Scottish and Southern Energy Plc (SSE). The project is currently under construction and represents one of the largest ever private investments in Scottish infrastructure.

- 9 ICOL is currently acting as an ‘interim Offshore Transmission Owner (OfTO)’ and as such is developing the required transmission infrastructure for ICOL’s Offshore Wind Farm. Once the transmission infrastructure is operational, it will be sold to a third party, this process will be facilitated and regulated by OfGEM.

1.3 Project Background

1.3.1 Original Offshore Applications

- 10 In July 2013 ICOL submitted separate applications to Marine Scotland for consent under Section 36 of the Electricity Act 1989 (United Kingdom Parliament, 1989) and Section 25 of the Marine (Scotland) Act 2010 (Scottish Parliament, 2010) for the Consented Offshore Wind Farm and Offshore Transmission Works (OfTW). In October 2014, the Scottish Ministers granted consent for the construction and operation of the Consented Offshore Wind Farm and OfTW.
- 11 The 2014 offshore consent decision was however quashed by the Outer House of the Court of Session in July 2016 following a petition brought by the Royal Society for Protection of Birds (RSPB) for judicial review of this, and other, offshore wind farm consents in the Firth of Forth. The Scottish Ministers successfully appealed the judicial review decision and the original decision to quash the offshore consents was overturned by the Inner House of the Court of Session in May 2017.
- 12 RSPB filed an application to the Supreme Court seeking permission to appeal this decision. However, on the 6 November 2017 the Supreme Court ordered that permission to appeal be refused because *“the application does not raise an arguable point of law of general public importance which ought to be considered at this time bearing mind that the case has already been the subject of judicial decision and reviewed on appeal”* (See Appendix 1A, Volume 2). As such, the consequence of the Supreme Court’s decision is that offshore consents granted by the Scottish Ministers in October 2014 are fully valid and can be implemented by ICOL.

1.3.2 Revised Offshore Application

- 13 While the court appeal for judicial review was in progress, ICOL carried out a review of the offshore elements and has prepared and submitted a Scoping Report for a Revised Offshore Wind Farm and OfTW. A copy of this report is available online at: <http://www.gov.scot/Topics/marine/Licensing/marine/scoping/InchCape/InchCapeScoping2017>
- 14 The Revised Offshore Wind Farm and OfTW is being developed to take advantage of advancements in offshore wind technology to achieve ICOL’s objectives to reduce environmental effects through the reduction in Wind Turbine Generator (WTG) numbers while maximising renewable energy generation and improving project efficiency.
- 15 In terms of location, the Revised Offshore Wind Farm and OfTW is comparable to the Consented Offshore Wind Farm and OfTW (as per Figure 1.2). The design of the Revised Offshore Wind Farm and OfTW aims to incorporate the latest and predicted future offshore wind farm technology.

- 16 It should be noted that ICOL will not construct both wind farms but will instead construct either the Consented Offshore Wind Farm or the Revised Offshore Wind Farm.

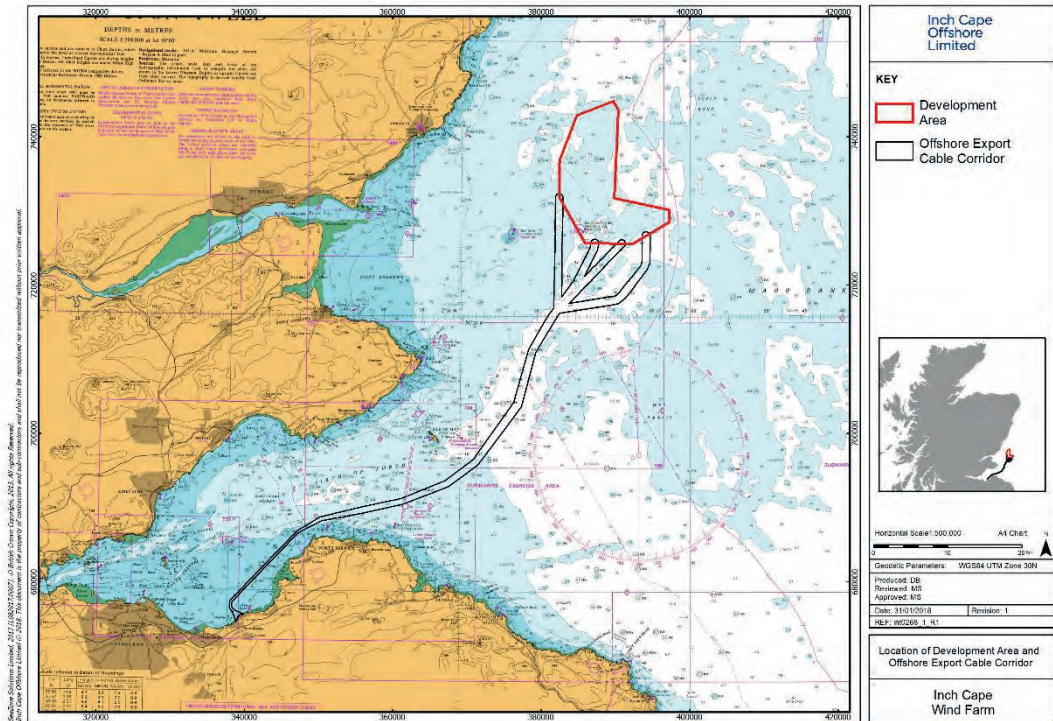


Figure 1.2 Inch Cape Wind Farm and Offshore Transmission Works

1.3.3 Change to Onshore Application Site

- 18 In September 2014, ICOL received PPP for the Inch Cape OnTW, to be located south of the former Cockenzie Coal Store, (ELC reference 14/00456/PPM). Due to a change in the overall project programme, ICOL initiated steps to renew this PPP in November 2016.
- 19 Due to feedback received during the initial renewal process of this PPP, ICOL undertook an updated site feasibility assessment with a view to considering potential alternative locations for the OnTW, as described in *Chapter 4: Site Selection and Alternatives*. As a result of this feasibility study, ICOL decided to no longer pursue the renewal application and this permission subsequently expired in September 2017.
- 20 The conclusion of this feasibility study was to relocate the OnTW to the site of the former Cockenzie Power Station (for which this EIA refers). This revised location is referred to as the Application Site and this EIA Report documents the results of the EIA carried out for the OnTW located on the Application Site.

1.3.4 Onshore Application

- 21 A Proposal of Application Notice (PAN), as required by the Town and Country Planning (Development Management Procedure) (Scotland) Regulations 2013 (Scottish Parliament, 2013), was submitted to ELC in May 2017. This submission formed the first formal part of the planning application process and outlined ICOL's community engagement strategy for Pre-application consultation (PAC). A PAC Report, which details the engagement process and stakeholder feedback, has been submitted to ELC along with this EIA Report in support of the planning application for the OnTW.
- 22 The Inch Cape Onshore Scoping Report was submitted on 14 July 2017 in support of a request for a Scoping Opinion from ELC. The Scoping Opinion and feedback from stakeholder consultations, conducted in parallel, has helped to inform the content of this EIA Report.
- 23 A Scoping Opinion from ELC was received on 6 September 2017 (see *Appendix 3A*, Volume 2).

1.4 Purpose of this Document

1.4.1 Scope of this EIA Report

- 24 This EIA Report will consider the effects on the environment (on topics identified in Table 1.1) from the following:
- The OnTW alone;
 - The OnTW with ICOL's Offshore Wind Farm and OfTW (using the assessment carried out for the Consented Offshore Wind Farm and OfTW); and
 - The OnTW cumulatively with other projects which have been identified through scoping (listed in *Chapter 3: Process and Methodology, Section 3.6.2*).
- 25 The assessment for the Revised Offshore Wind Farm and OfTW is currently being prepared and is due for submission in 2018. As ICOL hold a consent for the Consented Offshore Wind Farm

and OfTW the project assessment carried out in this EIA Report for the OnTW will be carried out on the assessment for the Consented Offshore Wind Farm and OfTW, which would be constructed if the Revised Offshore Wind Farm and OfTW is not consented by the Scottish Ministers.

- 26 The EIA Report for the Revised Offshore Wind Farm and OfTW will assess the OnTW (for which this application relates to) in its assessment, which ELC will be consulted upon. From the assessment work carried out to date on the Revised Offshore Wind Farm and OfTW the professional opinion of the expert advisors have noted that at a project level there would be no material difference between the project level assessments.
- 27 To assess the effects of the whole project (ICOL's Offshore Wind Farm, OfTW and OnTW) this EIA Report has assessed the cumulative effects of the OnTW with the Consented Offshore Wind Farm and OfTW. A cumulative assessment of the OnTW with the Revised Offshore Wind Farm and OfTW would be undertaken with the EIA Report for the Revised Offshore Wind Farm.

1.5 The EIA Team

- 28 The EIA team included ICOL staff and technical experts from a number of specialist consultancies as summarised in Table 1.1 below. A full description of relevant experience for each specialist is included within *Appendix 1B*, Volume 2.

Table 1.1 Inch Cape Offshore Limited's EIA Team Technical Specialists for the OnTW

Discipline	Consultant	Company	Experience
Planning	Simon Herriot	Savills Ltd.	<ul style="list-style-type: none"> • BSc (Hons) Town and Regional Planning • MRTPI
Stakeholder Engagement	Ross Laird	Grayling	<ul style="list-style-type: none"> • MA • DipCAM • MIPR
Hydrology, Geology and Hydrogeology	David Wright	SLR Consulting	<ul style="list-style-type: none"> • BEng Civil Engineering • MICE • CEng • MCIWEM • C.WEM
	Gordon Robb	SLR Consulting	<ul style="list-style-type: none"> • BSc Geography • MSc Engineering Hydrology • Fellow of Chartered Institution of Water and

			Environmental Management (FCIWEM) <ul style="list-style-type: none"> • MBA • Chartered Water and Environment Manager (C.WEM)
Ecology and Ornithology	Thomas Goater	RPS	<ul style="list-style-type: none"> • BSc (Hons) Marine biology • MSc Global Aquatic Biodiversity: Monitoring and Conservation • MCIEEM
Landscape and Visual	Lindsay Guthrie	SLR Consulting	<ul style="list-style-type: none"> • MA (Hons) Geography • MPhil Landscape Architecture CMLI
Cultural Heritage	Andy Bicket	Wessex Archaeology	<ul style="list-style-type: none"> • BSc (Hons) Environmental Archaeology • MA (with Distinction) in Archaeology Research • PhD Geography • Associate Member of the Institute of Archaeologists (AlfA) • Fellow of the Society of Antiquaries of Scotland
Noise and Vibration	Emma Parsons	SLR Consulting	<ul style="list-style-type: none"> • MIOA • BSc Architecture • PgCert Audio Acoustics • Certificate of competence in Environmental Noise Measurement • Certificate of Competence in Workplace Noise Assessment
Traffic and Transport	David Archibald	RPS	<ul style="list-style-type: none"> • BSc (Hons) Civil Engineering • MSc Transportation • CIHT • TPS

Socio-Economics, Tourism, Land-Use and Recreation	Andrew Walters	RPS	<ul style="list-style-type: none"> • LLM – Master of Laws – Sustainability and Environment • LLB – Bachelor of Laws • Diploma in Town Planning • MA (Hons) – Geography • Member of the Royal Town Planning Institute (MRTPI)
	Michael Fenny	RPS	<ul style="list-style-type: none"> • Member of the Royal Town Planning Institute • Urban and Regional Planning (MSc) • Geography (MA Hons)
Air Quality	Philip Branchflower	SLR Consulting	<ul style="list-style-type: none"> • BSc Chemistry • MIAQM • MEnvSc

1.6 EIA Report Structure

1.6.1 Composition

29 The EIA Report is comprised of two volumes. Volume 1 presents the key findings of the EIA and is split into the following overarching sections:

- Section 1: Introductory Chapters
- Section 2: Biological Environment
- Section 3: Physical Environment
- Section 4: Human Health and Population
- Section 5: Summary of Assessment

30 Volume 2 will comprise the technical appendices.

31 The Sections of the EIA Report are the broad overarching headings for each of the technical chapters, and will be broken down as follows:

Table 1.2 EIA Report Technical Chapter Breakdown

Section	Chapter
Section 1: Introductory Chapters	Chapter 1: Introduction
	Chapter 2 Policy and Legislation
	Chapter 3: Process and Methodology
	Chapter 4: Site Selection and Alternatives
	Chapter 5: Description of Development
Section 2: Biological Environment	Chapter 6: Ecology
Section 3: Physical Environment	Chapter 7: Hydrology, Geology and Hydrogeology
	Chapter 8: Landscape and Visual
	Chapter 9: Cultural Heritage
Section 4: Human Health and Population	Chapter 10: Noise and Vibration
	Chapter 11: Traffic and Transport
	Chapter 12: Socio-Economics, Tourism, Land-Use and Recreation
	Chapter 13: Air Quality
Section 5: Summary of Assessment	Chapter 14: Summary of Assessment

32 The Appendices referred to in each chapter are presented in Volume 2 and are detailed in Table 1.3 below.

Table 1.3 List of Appendices

Chapter	Associated Appendices
Chapter 1: Introduction	Appendix 1A UK Supreme Court Order Appendix 1B Consultants Experience
Chapter 3: Process and Methodology	Appendix 3A ELC Scoping Opinion Appendix 3B Note to ELC Appendix 3C ELC Response Appendix 3D Noise and Landscape Assessment without the Bund to the North of Atholl View
Chapter 4: Site Selection and Alternatives	Appendix 4A Original OnTW ES Chapter 4

Chapter 6: Ecology	Appendix 6A Original Ecological Surveys (2012/13) Appendix 6B Updated Ecological Surveys (2017) Appendix 6C Intertidal and Near-shore Bird Surveys (2012/13)
Chapter 7: Hydrology, Hydrogeology and Geology	Appendix 7A Flood Risk Assessment Appendix 7B Coal Mining Risk Assessment Appendix 7C Site Inspection Photographs Appendix 7D CAR Licenses
Chapter 8: Landscape and Visual	Appendix 8A Landscape and Visual Impact Assessment Methodology Appendix 8B Landscape and Visual Figures Appendix 8C Landscape and Visual Impact Assessment Viewpoint Assessment
Chapter 9: Cultural Heritage and Archaeology	Appendix 9A Gazetteer of Identified Cultural Heritage Receptors within the ASA Appendix 9B Cultural Heritage Plates
Chapter 10: Noise and Vibration	Appendix 10A Example Noise Levels
Chapter 11: Traffic and Transport	Appendix 11A Traffic Surveys
Chapter 12: Socio-Economics, Tourism, Land-Use and Recreation	Appendix 12A Socioeconomics Baseline
Chapter 13: Air Quality	Appendix 13A EPUK and IAQM Operational Phase Screening Criteria

33 Separate documents, have also been produced in support of the application including a:

- Non Technical Summary;
- Planning Statement;
- Pre-Application Consultation (PAC) Report;
- OnTW Habitats Regulations Appraisal; and
- Project Assessment (Summary of the Onshore and Offshore Environmental Impact Assessments).

1.7 Opportunity to Comment

34 In accordance with legislative requirements and industry best practice, submission of the planning application will be advertised and this EIA Report will be publicly available. ICOL's approach has been to engage with stakeholders throughout the development of the OnTW and stakeholder engagement will continue into the determination phase.

35 A copy of the planning application, with the respective plans showing the area to which it relates, together with a copy of this EIA Report, is available for inspection, free of charge, via the Inch Cape website (<http://www.inchcapewind.com/publications>) and during opening hours at:

- East Lothian Council, John Muir House, Brewery Park, Haddington, EH41 3HA
- Longniddry Library, Churchway, Longniddry, East Lothian, EH32 0LW
- Port Seton Library, Community Centre, South Seton Park, Port Seton, EH32 0BG
- Prestonpans Library, West Loan, Prestonpans, EH32 9NX
- Tranent Library, The George Johnstone Centre, 35 Winton Place, Tranent, EH33 1AE

36 Engagement with the public and interested groups is a critical element of the Inch Cape development strategy. A broad range of individuals and organisations have met with the project team and provided initial representation on the proposals. Consideration and incorporation of these interests has been a key part of the works to date, and this will continue throughout the development process. As such, ICOL would encourage organisations and individuals to respond to the submissions.

37 If you have any comments or questions regarding our proposal, please contact us at consenting@inchcapewind.com or write to us c/o Onshore Consents Manager at the following address:

Inch Cape Offshore Limited

5th Floor, 40 Princes Street

Edinburgh

EH2 2BY

38 If you wish to comment on this EIA Report or make a representation to ELC please write to East Lothian Council at the following address:

Environment

John Muir House

Brewery Park

Haddington

EH41 3HA

References

United Kingdom Parliament (1989). *Electricity Act 1989*. Available at:
<http://www.legislation.gov.uk/ukpga/1989/29/contents>

United Kingdom Parliament (2004). *Energy Act 2004*. Available at:
<http://www.legislation.gov.uk/ukpga/2004/20/contents>

Scottish Parliament (1997). *Town and Country Planning (Scotland) Act 1997*. Available at:
<http://www.legislation.gov.uk/ukpga/1997/8>

Scottish Parliament (2010). *Marine (Scotland) Act 2010*. Available at:
http://www.legislation.gov.uk/asp/2010/5/pdfs/asp_20100005_en.pdf

Scottish Parliament (2011). *Town and Country Planning (Environmental Impact Assessment) (Scotland) Regulations 2011*. Available at:
http://www.legislation.gov.uk/ssi/2011/139/pdfs/ssi_20110139_en.pdf